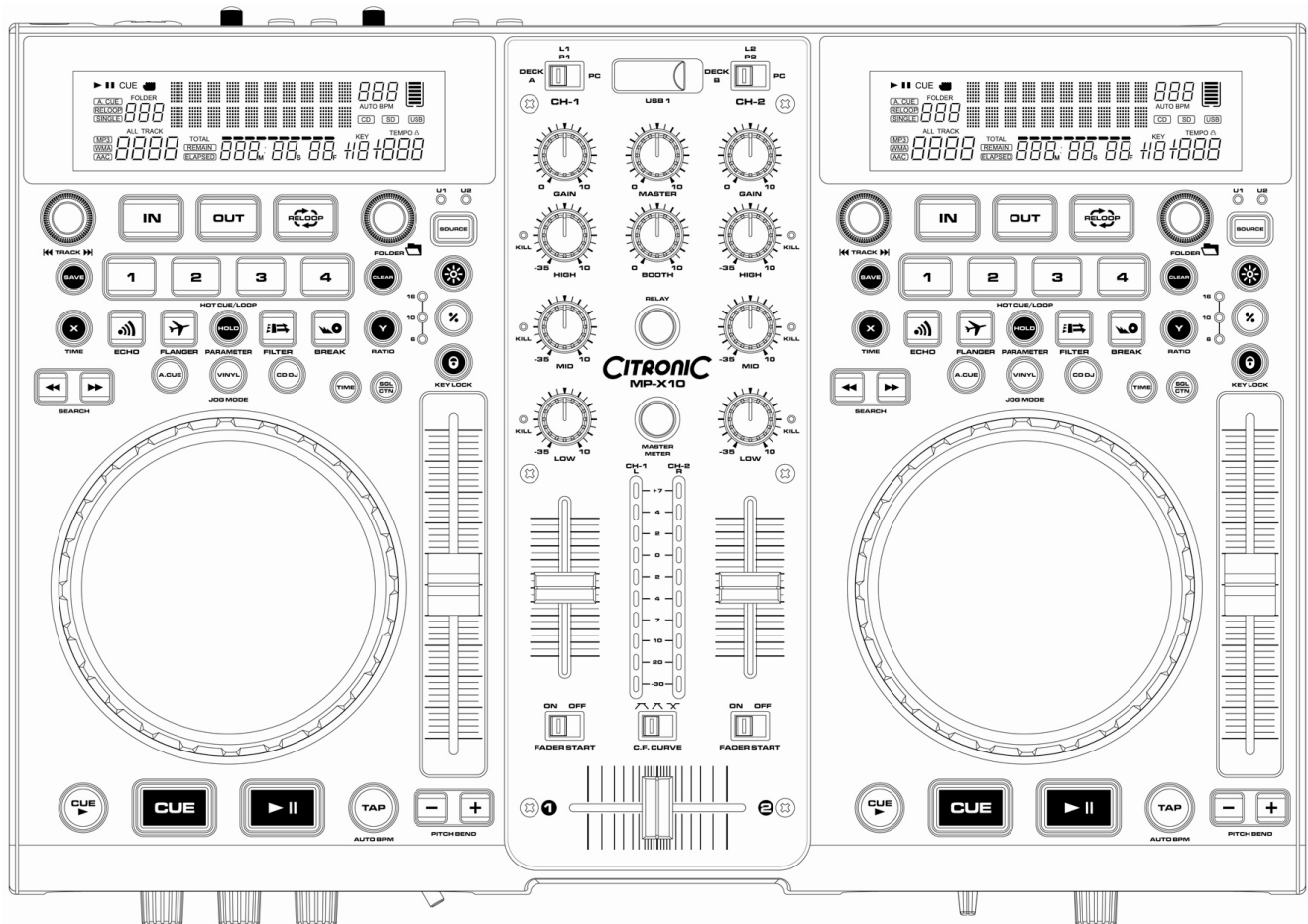


CITRONIC®

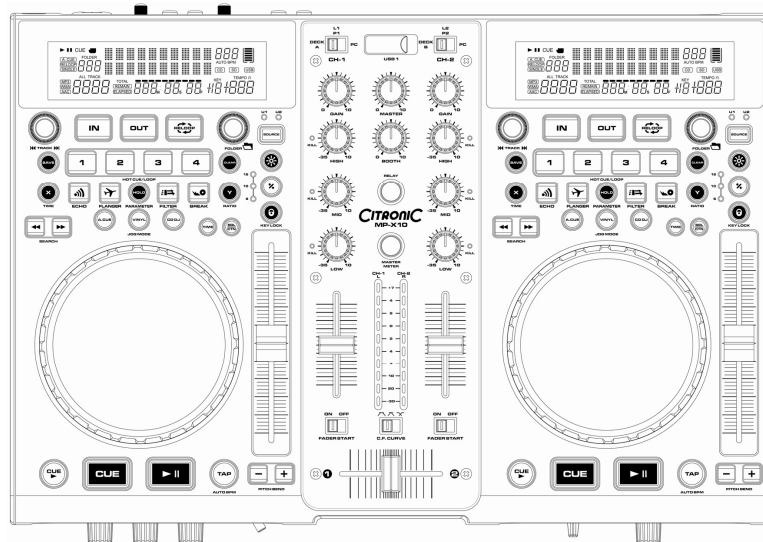
MP-X10



TRAKTOR MAP MANUAL

Version 2.0

CITRONIC MP-X10



Initial Setup

1. Before making or changing the connections, switch off the power and disconnect the power cord from the AV outlet.
2. We recommend to use high quality shielded audio cables when connecting input/output devices as it makes a huge difference in sound reproduction quality.
3. Do not use excessively long cables. Be sure the plugs and jacks are securely fastened. Loose connections cause hum, noise or intermittence that can damage your speakers.
4. Connecting to a computer – the controller will be automatically recognised by both Windows based PC / Laptops operating Windows XP SP2 or later and MAC O/S 10.4 or later as a generic MIDI controller without the need to install drivers (Note the DB software only works with Windows based operating computers). You can then use any DJ software with MIDI mapping features to program in the functions to operate on screen (See Page 20)

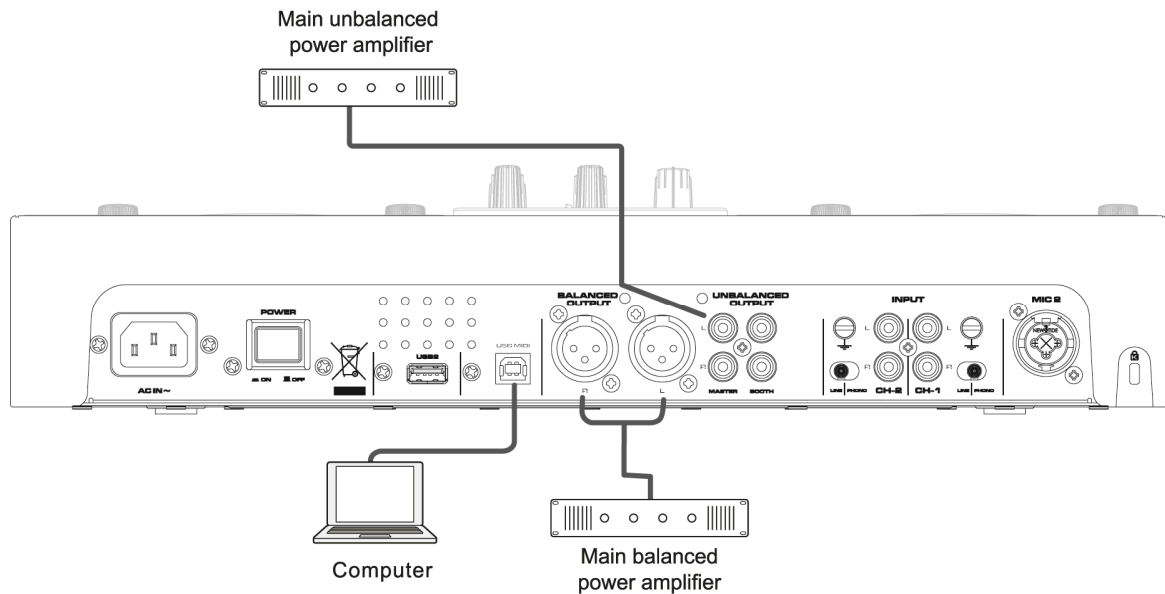
PC / MAC Requirements:

Windows 7, Windows Vista SP2, Windows XP SP2:

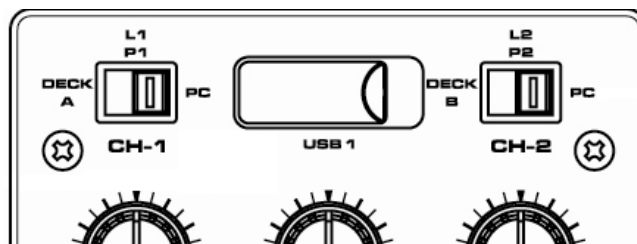
Min requirements: 2 GHz Intel Pentium 4, 1GB DDR RAM, USB 2.0 connection

MAC OS X: 1.83 GHz Intel Core Duo, 1GB DDR RAM, USB 2.0 connection

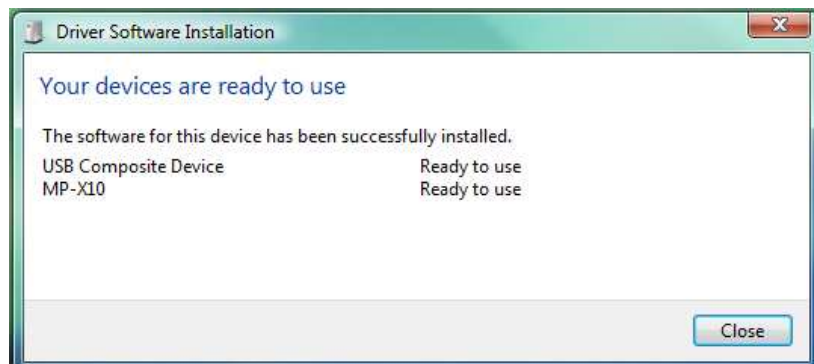
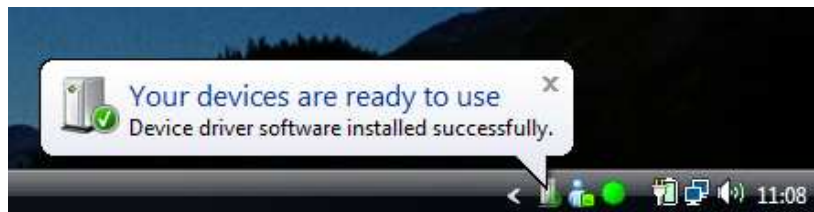
Traktor Setup



- 1) Connect the supplied USB cable (or any A to B USB lead that is version 2.0 or above) to the USB MIDI connection on the rear of the MPX10 unit.
- 2) Connect the USB A connection to a PC or Laptop and turn the power on
- 3) Ensure the channel outputs on the MPX10 are both set to "PC"

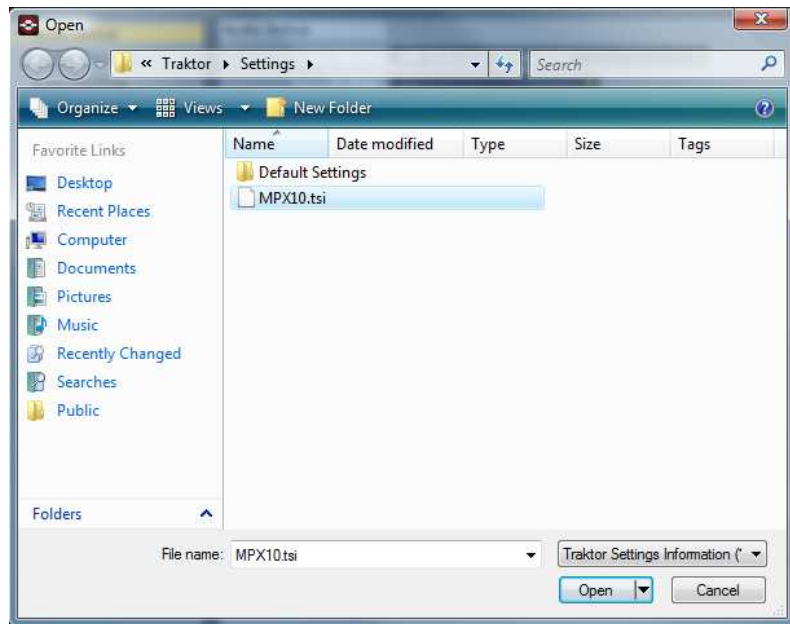


- 4) Your computer should detect the MPX10 as a sound card and Generic USB MIDI controller

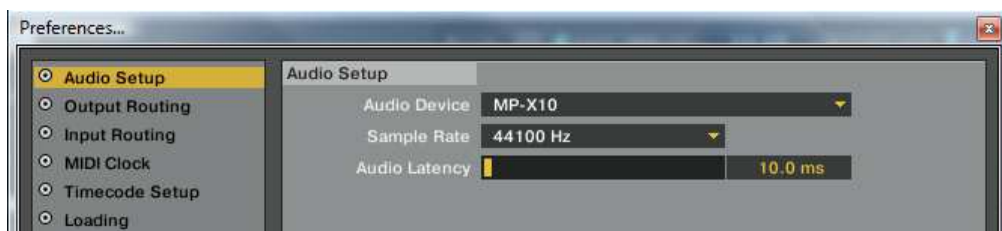


5) Load Traktor.

6) Click on "PREFERENCES", then click "IMPORT". Select the "MPX10.tsi" file and click open.



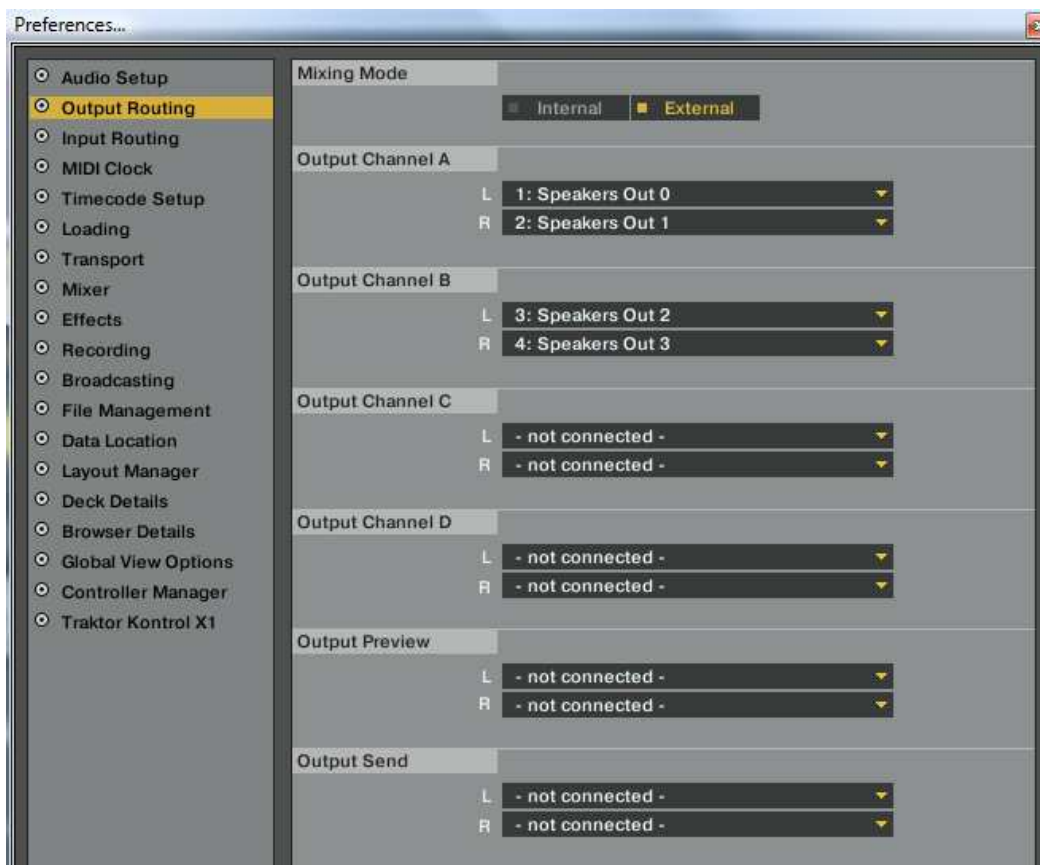
7) Click on Audio output and ensure that the MPX10 is set as the sound card to ensure output is played from the controller unit.



- 8) Click on "OUTPUT Routing". Depending on what Mixer setting you have your MPX10 (DEFAULT = EXTERNAL CONTROL) follow the correct setup

To learn more about the two mixer modes please refer to the Firmware update notes 3.0 or download the latest manual and refer to page 14 via <http://citronic.com/en/product/170.700UK>

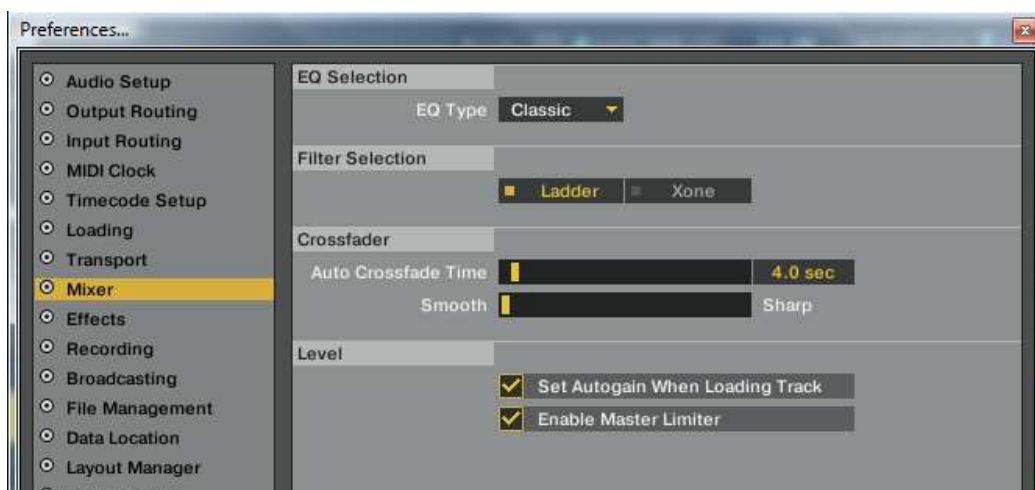
EXTERNAL CONTROL:



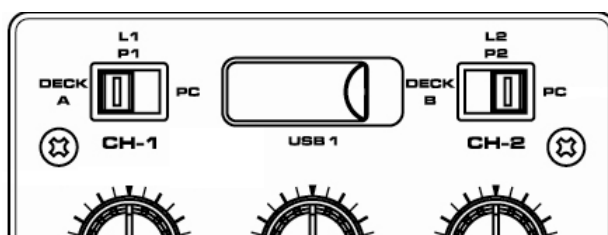
MIDI MODE (Allows you to control the digital effects in Traktor)



9) Click "Mixer" and ensure the follow setup matches the below picture:



You should now be ready to use your MPX10 on Traktor. You can also switch one side of the deck to PC and operate the other directly from the player (External Mixer Mode recommended for this option):



See the next section for the Functions that each button has while operating TRAKTOR

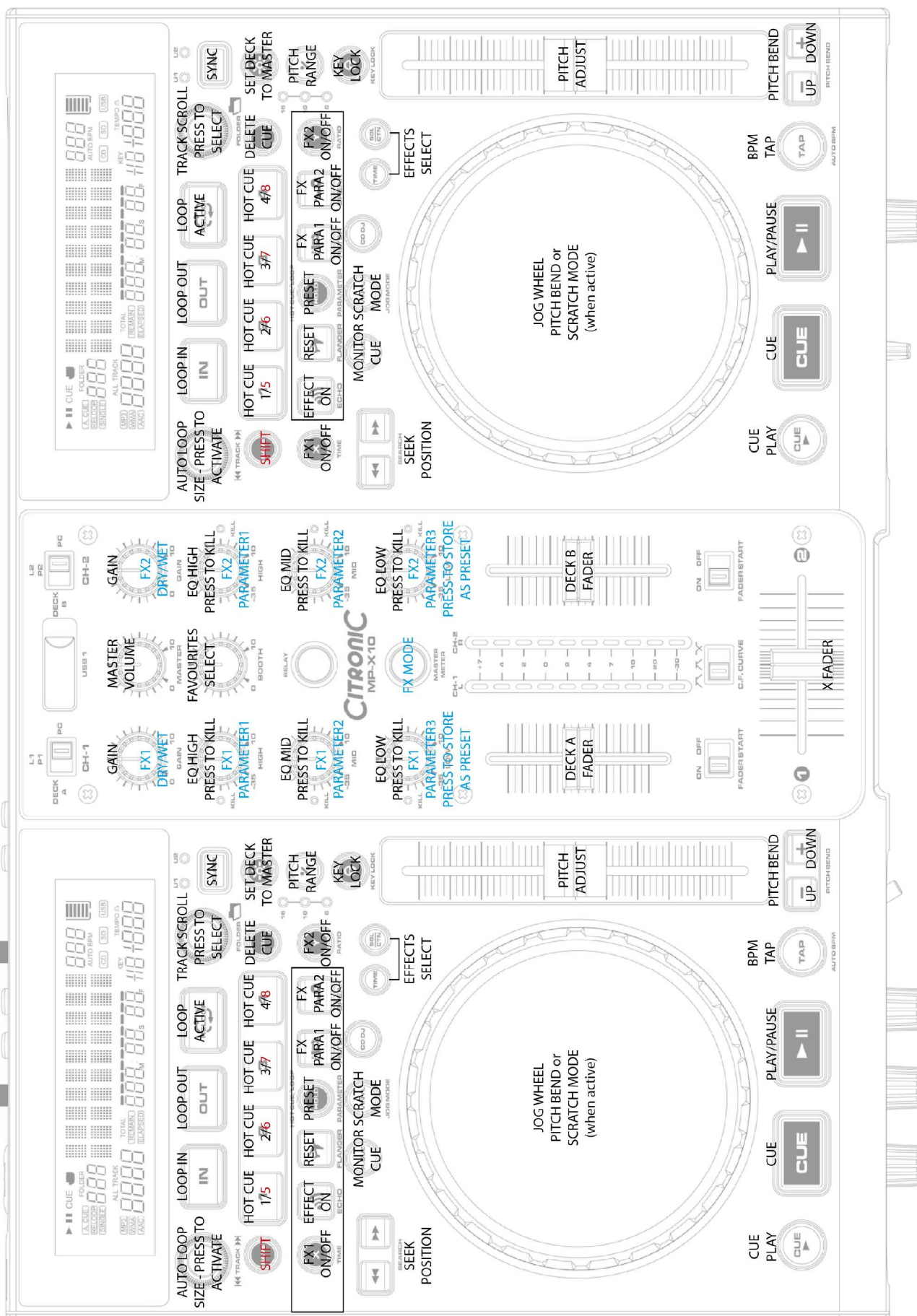
FRONT PANNEL OPERATION (Mixer = MIDI)



Note the microphone channel will not work as a MIDI input through Traktor but will continue to work independently through the MP-X10 unit when in PC mode.

TOP PANNEL OPERATIONS (Mixer = MIDI)

DECK B



DECK A

FOR MORE INFORMATION ON CITRONIC PRODUCTS VISIT

WWW.CITRONIC.COM

Copyright protected by Citronic UK