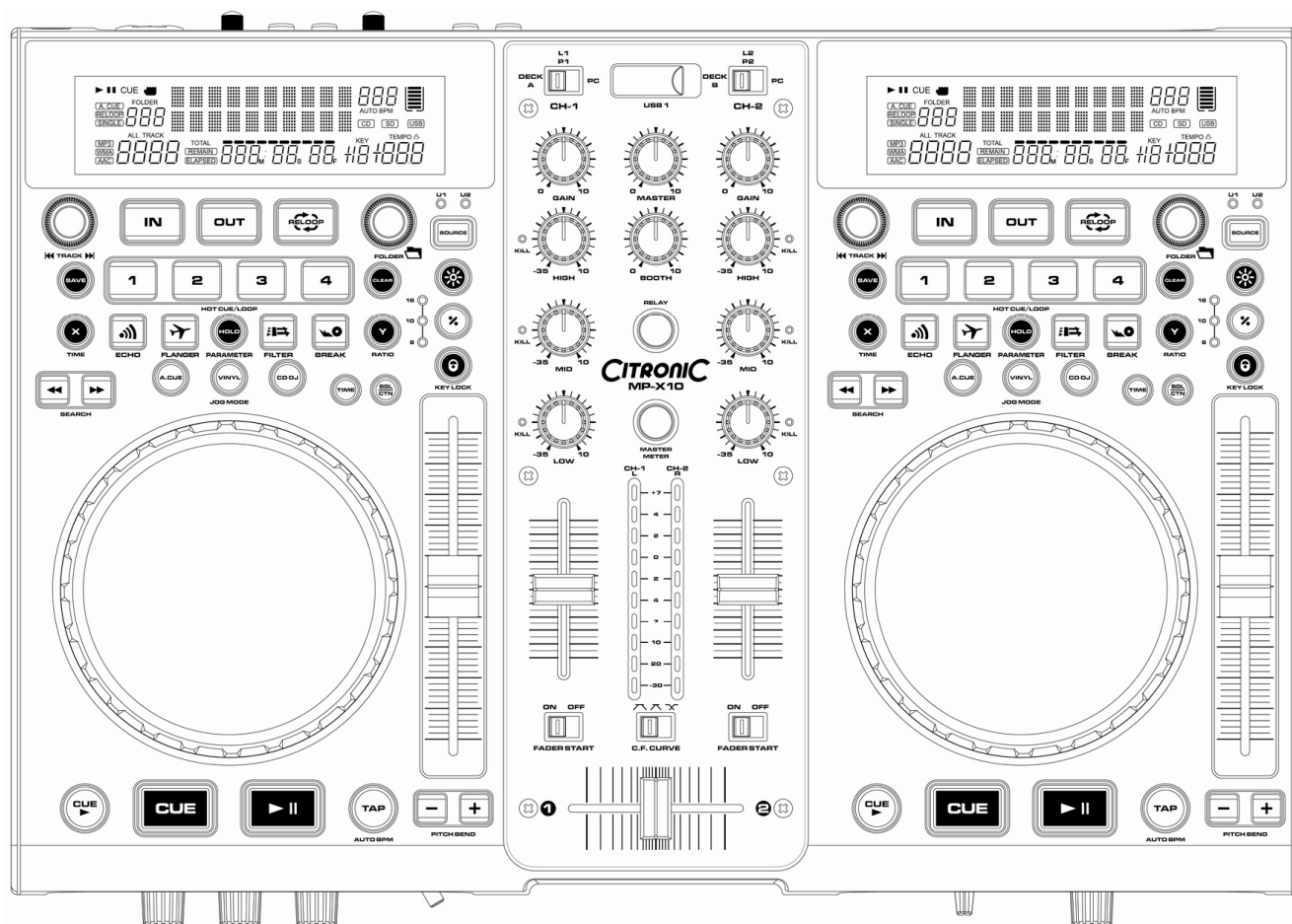


# CITRONIC®

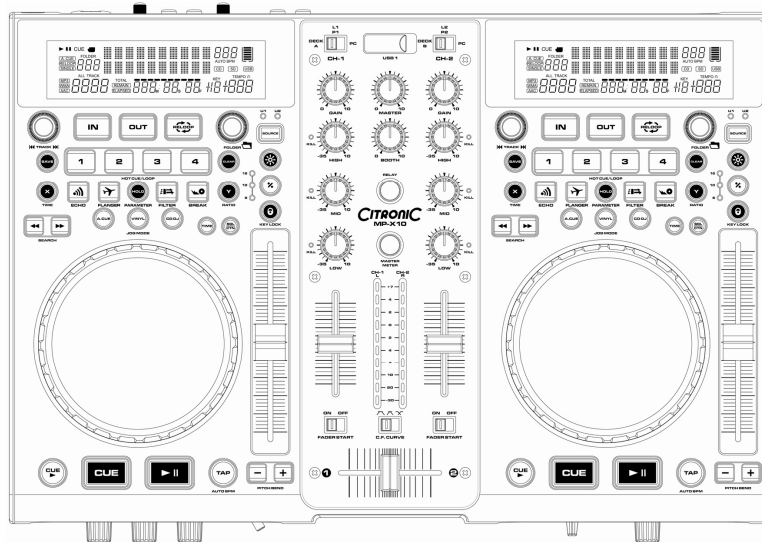
## MP-X10



## VIRTUAL 7 LE MAP MANUAL

Version 2.0

# CITRONIC MP-X10



## Initial Setup

1. Before making or changing the connections, switch off the power and disconnect the power cord from the AV outlet.
2. We recommend to use high quality shielded audio cables when connecting input/output devices as it makes a huge difference in sound reproduction quality.
3. Do not use excessively long cables. Be sure the plugs and jacks are securely fastened. Loose connections cause hum, noise or intermittence that can damage your speakers.
4. Connecting to a computer – the controller will be automatically recognised by both Windows based PC / Laptops operating Windows XP SP2 or later and MAC O/S 10.4 or later as a generic MIDI controller without the need to install drivers (Note the DB software only works with Windows based operating computers). You can then use any DJ software with MIDI mapping features to program in the functions to operate on screen (See Page 20)

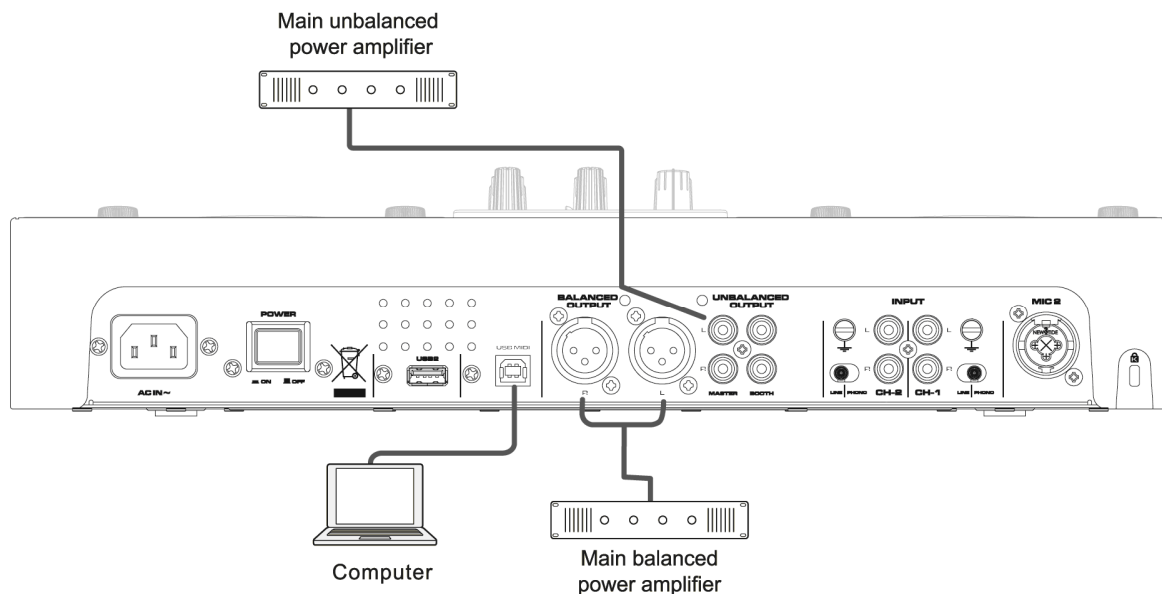
## PC Requirements:

Intel® Pentium® 4 or AMD Athlon™ XP  
1024x768 resolution  
DirectX compatible soundcard  
512MB RAM  
50MB free on the hard drive  
Windows XP Home

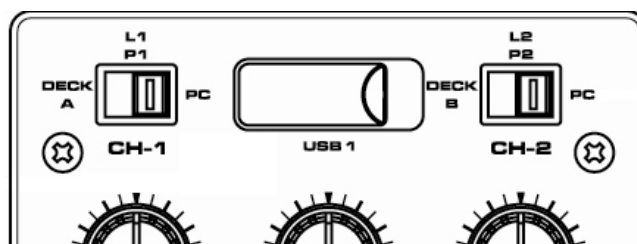
## MAC Requirements:

Intel® Pentium  
Mac OS X v10.5  
1024x768 resolution  
CoreAudio compatible soundcard  
1024mb RAM  
50mb free hard drive

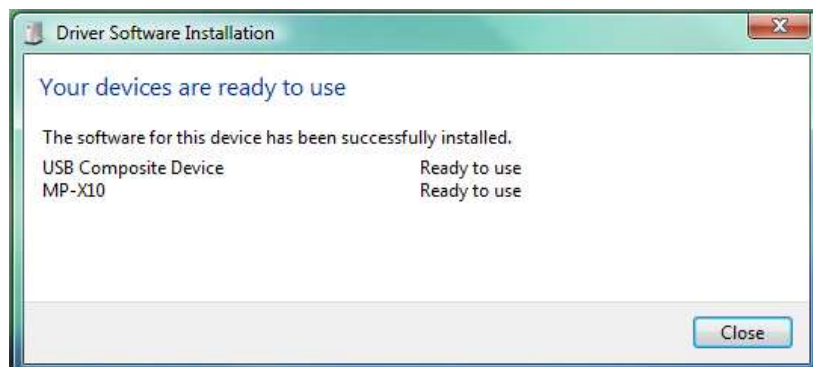
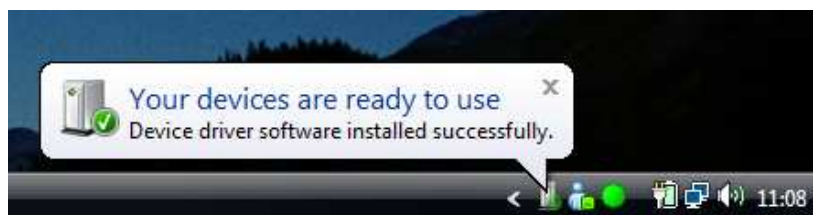
## VIRTUAL DJ 7 LE Setup



- 1) Connect the supplied USB cable (or any A to B USB lead that is version 2.0 or above) to the USB MIDI connection on the rear of the MPX10 unit.
- 2) Connect the USB A connection to a PC or Laptop and turn the power on
- 3) Ensure the channel outputs on the MPX10 are both set to "PC"



- 4) Your computer should detect the MPX10 as a sound card and Generic USB MIDI controller as shown below:

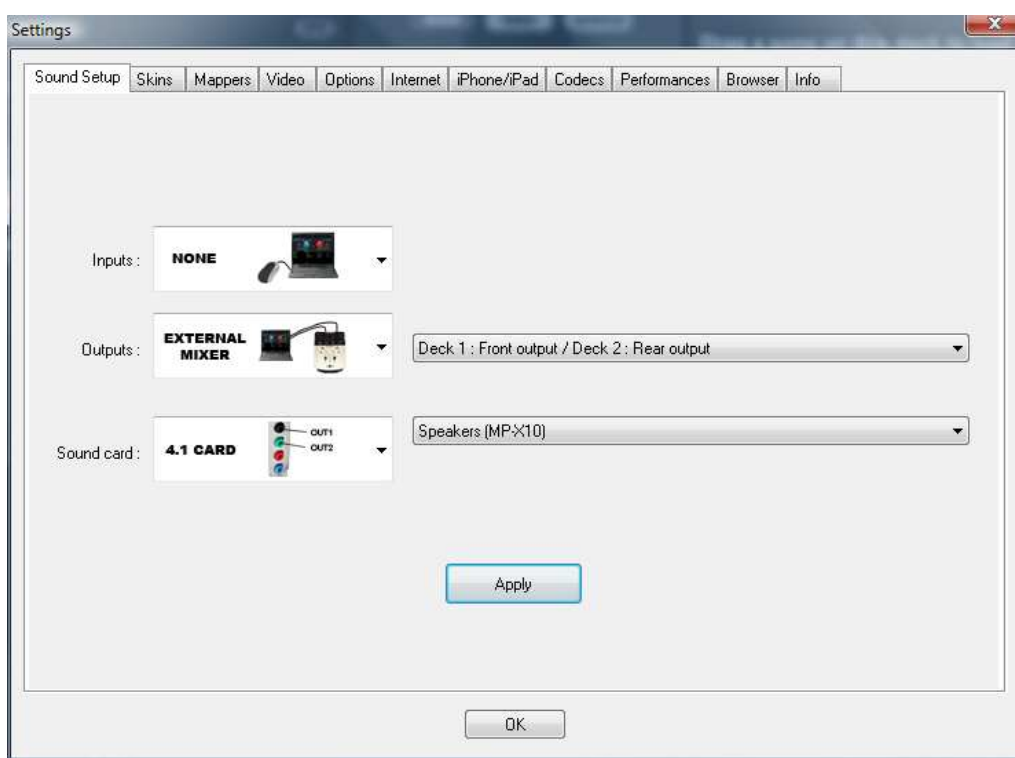


5) Load Virtual DJ LE and enter the serial number when prompted

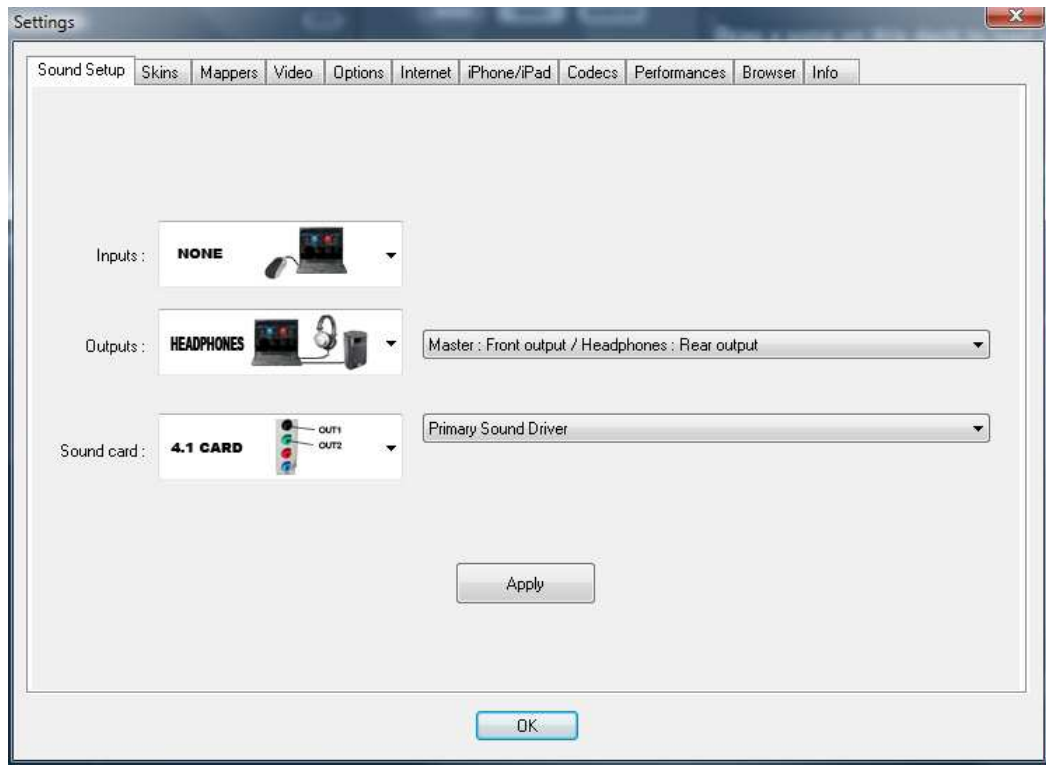
6) On start up click on "CONFIG" button to open the options and setup the sound card. depending on what setting you have your mixer as (DEFAULT = EXTERNAL CONTROL) determines what setup you should follow.

To learn more about the two mixer modes please refer to the Firmware update notes 3.0 or download the latest manual and refer to page 14 via <http://citronic.com/en/product/170.700UK>

#### EXTERNAL CONTROL:

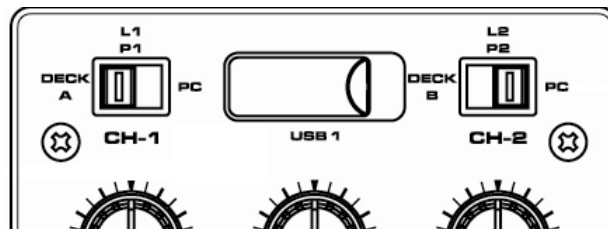


#### MIDI MODE:



Press APPLY followed by OK.

You should now be ready to use your MPX10 on Virtual DJ 7 LE. If you upgrade to Virtual DJ Pro 7 the device can work in 2 or 4 deck mode. To use 4 deck mode press the SOURCE button to switch between decks. You can also switch one side of the deck to USB FLASH or Line input and operate the other directly from the player (External Mixer Mode recommended for this option):

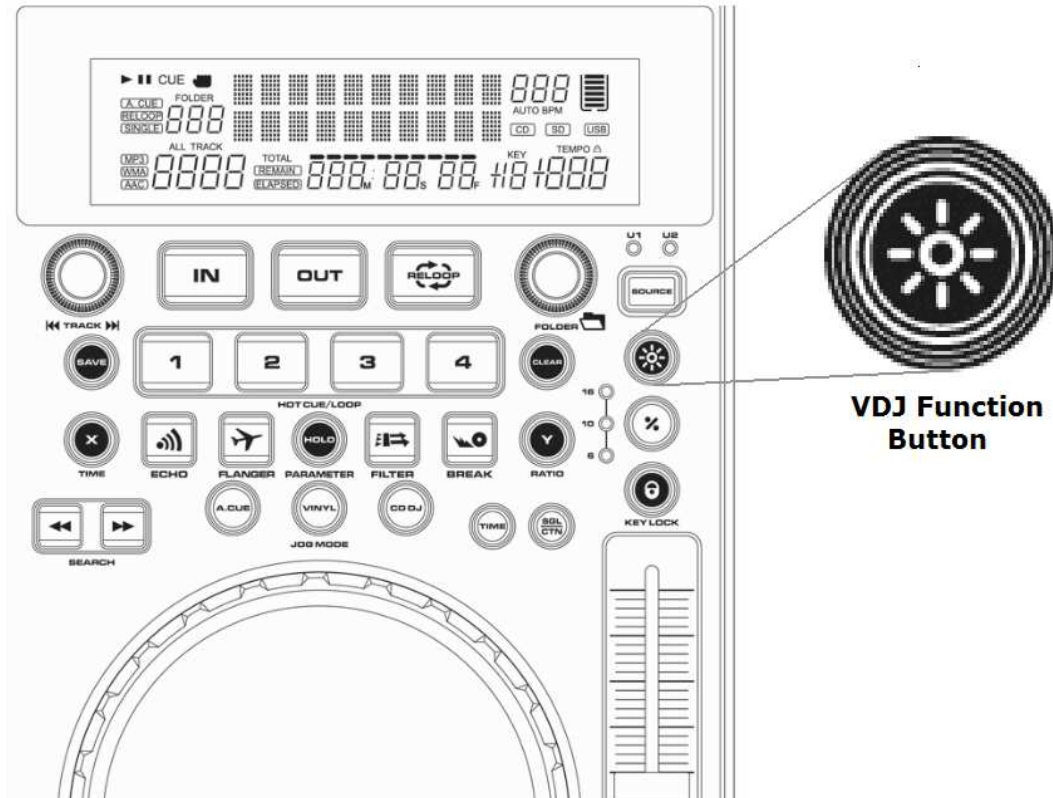


See the next section for the Functions that each button has while operating Virtual DJ 7 LE

## OPERATION GUIDE:

The MPX10 has the same operation as when in stand alone mode: See the layout map at the end of this guide which indicates what each button does. There are however some added features which we included to enhance the use of the software and controller:

### Function button:



The Function button on the controller puts the MPX10 in to one of three modes which effect the operation of other buttons to give you easy access to more exciting features:

Toggle through each mode by pressing the button continuously.

#### Function 1: Normal mode (LED OFF)

- |              |  |
|--------------|--|
| Track Dial:  | Turn to toggle through the tracks on the playlist and press to load the track into the Deck.                                 |
| Folder Dial: | Turn to toggle through folders and press to open them.   |
| Hot Cues:    | Press to set and recall Hot cue points in a song. To delete hold down CLEAR and press the Hot cue button you wish to delete. |
| X Button:    | When used in combination with the Jog wheel will adjust parameter 1 of the digital effects (EG: Flanger, Echo... etc)        |
| Y Button:    | When used in combination with the Jog wheel will adjust parameter 2 of the digital effects (EG: Flanger, Echo... etc)        |

## **Function 2: Sample mode (LED ON)**

Track Dial:	Rotate to alter the volume of the selected sample. Press to activate or deactivate the sample.
Folder Dial:	Rotate to alter the shutter length of the selected sample. Press to activate deactivate the sample
Hot Cues:	Used to activate / deactivate samples loaded in slots 1 - 4
X Button:	When used in combination with the JOG wheel will increase or decrease the volume of the playing sample
Y Button:	When used in combination with the JOG wheel will increase or decrease the shutter length of the playing sample.

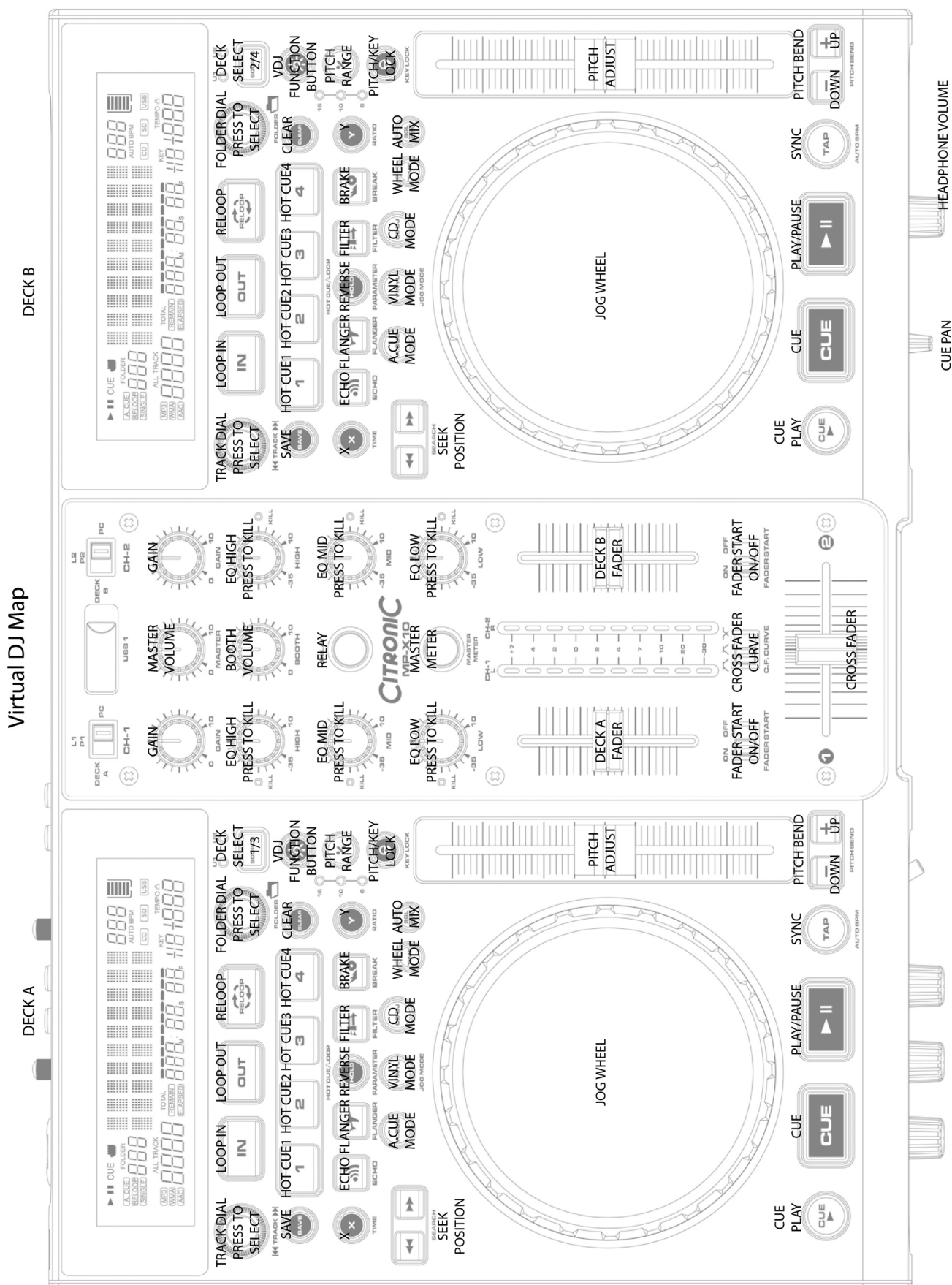
## **Function 3: Loop mode (LED Flashing)**

Track Dial:	Rotate to lengthen or shorten the Auto loop length press to activate or deactivate.
Folder Dial:	Rotate to move the loop along forward or backwards 1 beat at a time
Hot Cues:	Press the following buttons to set the preset auto loop beat:  1 = 1 beat 2 = 2 beats 3 = 4 beats 4 = 8 beats
X Button:	When used in combination with the JOG wheel to adjust the end of the loop accurately.
Y Button:	When used in combination with the JOG wheel to adjust the IN point of the loop. NOTE this will also move the out point along.

The microphone channel will not work as a MIDI input through Virtual DJ Pro but will continue to work independently through the MP-X10 unit when in PC mode.

## CONTROLLER OPERATIONS (Note in external mixer mode the animations will not operate)

(Note in external mixer mode the animations will not operate)





**FOR MORE INFORMATION ON CITRONIC PRODUCTS VISIT**

**[WWW.CITRONIC.COM](http://WWW.CITRONIC.COM)**

**Copyright protected by Citronic UK**