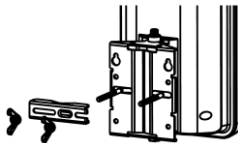
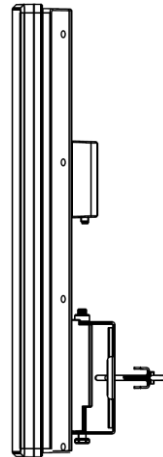
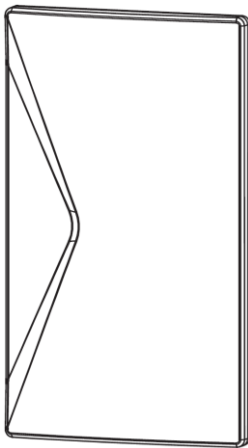


**NAUHF-A38**

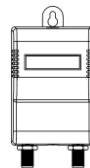
4G READY ACTIVE NOTCH TV  
AERIAL

Item ref: 130.002UK

User Manual

**NAUHF-A38**

Pole Mount Bracket



Power Supply

## INTRODUCTION:

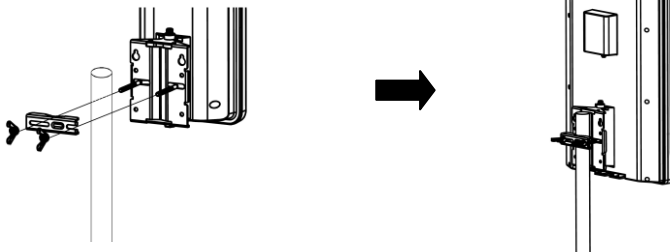
Thank you for choosing Mercury antenna. This is a new concept antenna based on current mobile communication technology. Anti-UV and water proof casing make it ideal for outdoor installation. It is specially designed for the purpose of analogue and digital TV reception, with a built in 4G filter, so that you will never have to worry about interference from the 4G mobile signal. The design of this aerial is much more compact compare to a traditional aerial of the same gain; this is due to the built in, low noise, high gain amplifier, making it possible. Ready to install from the box, which will save a considerable amount of installation time and labour cost. Well-designed outer case will greatly improve the appearance of an aerial installation.

## SPECIFICATION:

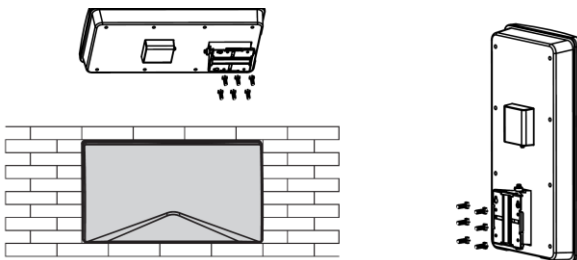
Frequency Range :	470-790MHz
Antenna Gain:	38dB
Maximum Output Level:	100dB $\mu$ V
Impedence:	75 $\Omega$
Noise Figure:	$\leq 3.5$ dB
Power Supply:	12Vdc 50mA

## INSTALLATION:

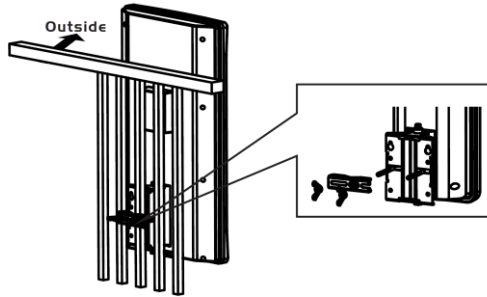
- Using the bracket to clamp the aerial to the pole mast.



- Antenna can also be mounted directly to the wall horizontally or vertically. Simply take the wall bracket off from the back of the antenna, screw bracket onto the wall facing closest to the transmission tower, and screw the antenna back on to the bracket.

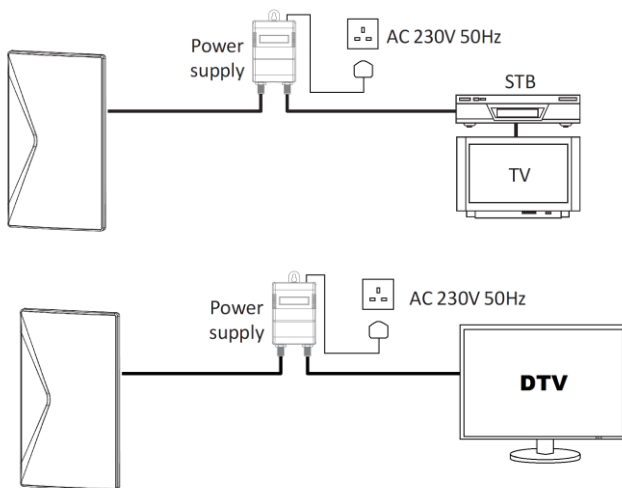


- For installation in a flat or apartment, it is also possible to mount the aerial directly on to a balcony. Please ensure antenna is facing outside.

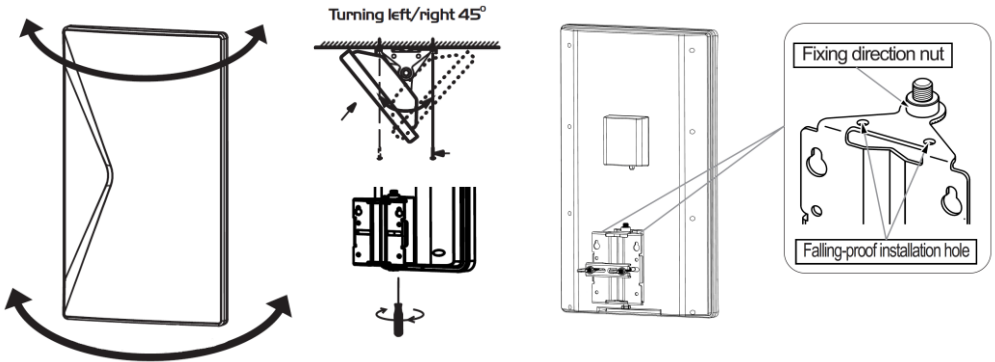


#### CONNECTION:

Ensure both power supply and TV are switched off and unplugged. Connect the antenna port of the power supply to the antenna by F plug coax cable, use the water proof boot supplied to cover the connection. Then connect the TV port of the power supply to set top TV receiver, for TV with digital TV ready, it can be plugged into the TV directly.



After finishing mounting the antenna, adjust the position of the antenna until the best picture and sound quality is achieved (Usually facing the direction of the transmitting tower). Antenna mount is designed to be turned 45° to left and right for easy positioning. Fix the antenna at its best receiving position by tighten the fix position nut at the bottom of the mount. Cable management can then be performed to improve overall appearance and avoid tripping over. Extra safety wire can be installed through the pre-drilled hole as indicated below to prevent falling in case of bracket failure.



Please note, for best reception. Position antenna at the highest possible location, as blockage in line of sight between antenna and transmission tower may cause signal loss, having the antenna installed at highest possible location will minimize the chance of signal blockage.



This product is classed as Electrical or Electronic equipment and should not be disposed with other household or commercial waste at the end of its useful life. The goods must be disposed of according to your local council guidelines.

*Errors and omissions excepted.  
Copyright© 2013. AVSL Group Ltd*