

## MAUHF-A24

4G READY CLAMP ON UHF  
MIXER AERIAL

Item ref: 130.023UK

User Manual



Diplexers



F plug coax leads

## INTRODUCTION:

Thank you for choosing this Mercury aerial. This aerial is designed for the reception of FM, UHF digital TV signals. It is designed to clamp onto a satellite dish and does not need a mast. With a built in low noise signal amplifier and mixer, it boosts the signals and transmits them along the same coax cables as the satellite signal. With dual outputs, this aerial is suitable for twin LNB installations.

## SPECIFICATION:

Power Supply:	Via satellite receiver (13 – 18Vdc 60mA)
Frequency Range:	470 – 790MHz
Gain:	24dB
Impedance:	75Ω
Connector:	2 x SAT input (950 – 2150MHz), 2 x Mix output
Insertion Loss:	3dB
Dimensions & weight	300 x 100 x 180mm, 350g

## PRODUCT FEATURES:

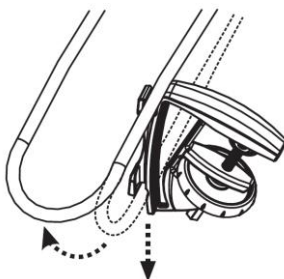
- Tool free installation can be easily installed on existing satellite dish.
- Built in 4G signal filter to prevent 4G mobile signal interference.
- Built in high gain low noise amplifier, with DC pass to power the amplifier and LNB from satellite receiver.
- Built in signal mixer to combine satellite and terrestrial signal to transmit from a single cable, saving material and labour cost.
- Supplied with diplexer to split satellite and terrestrial signal individually to set top box and satellite receiver.
- Compatible with DTV(DVB-T, ATSC, ISDB-T, T-DMB)

## INSTALLATION:

Please note, before installation turn the satellite receiver off and unplug from the mains supply. Take care not to alter the satellite dish position during installation, otherwise realignment may be required.

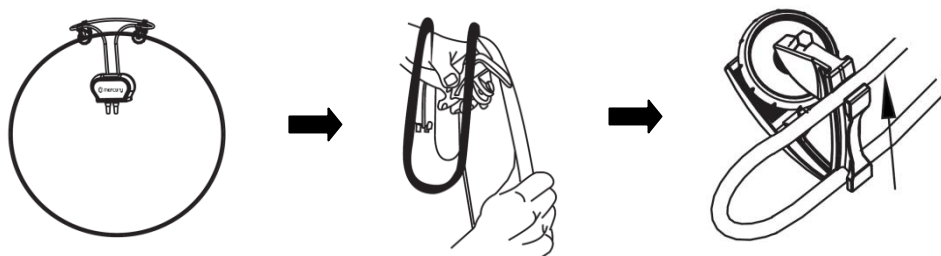
### Step 1:

Gently pull the elements apart from each other and detach one side of each of the mounting clamps from the aerial element.



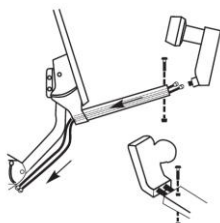
## Step 2:

Position the aerial on top of the dish with dipole box at the back of the satellite dish, ensure the Mercury logo is facing outward. Put the mounting clamps over the edge of the satellite dish one by one and attach the loose end back on the aerial. Turn the thumbscrew clockwise to tighten the aerial in position.



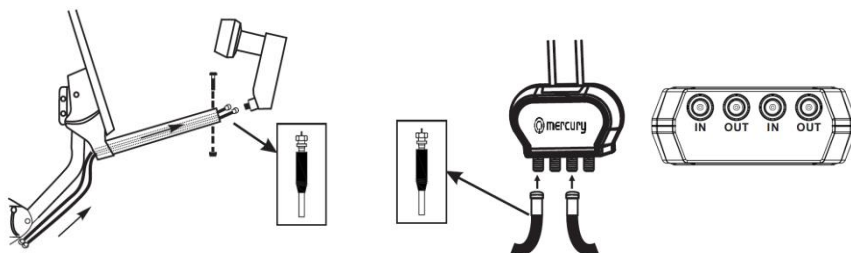
## Step 3:

Undo the screws that hold LNB on the support beam, disconnect the cable from LNB output if it is an existing installation.



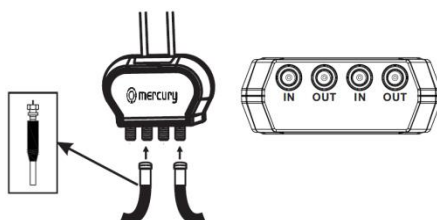
## Step 4:

Connect the outputs of the LNB to the inputs of the aerial dipole box using the supplied coax cables, use the waterproof boots supplied to cover the connections to prevent ingress of water.



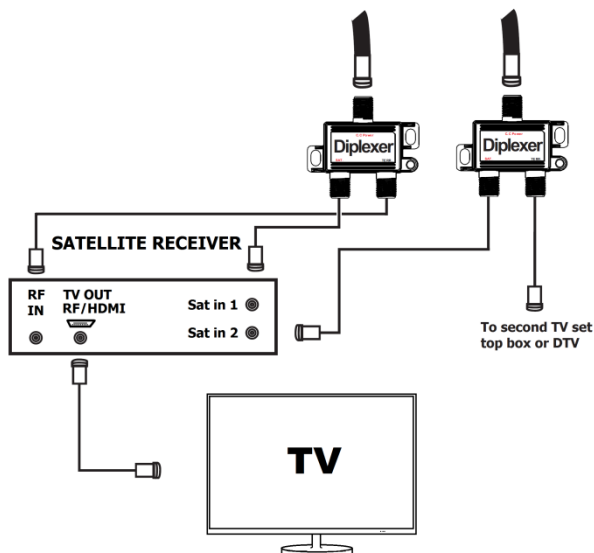
## Step 5:

On existing installations, connect the cables removed from LNB to the mix outputs on the aerial. Otherwise run the cables neatly to the satellite receiver.



# Step 6:

At the end of the cable connect the diplexer as shown in the diagram below (to split the satellite and terrestrial signals). Connect the SAT on the diplexers to the SAT inputs on the satellite receiver and Ter on the diplexer to TV set top box (or directly from Ter on the diplexer to TV if it is digital TV compatible). For satellite boxes, such as SKY+, that can view one channel while recording another requires 2 satellite inputs. Below diagram shows an example of how it can be connect with a free Ter connection to secondary TV if required.



This product is classed as Electrical or Electronic equipment and should not be disposed with other household or commercial waste at the end of its useful life. The goods must be disposed of according to your local council guidelines.

*Errors and omissions excepted.  
Copyright© 2014. AVSL Group Ltd*