

Solar-charge LED String Light

Item ref: 155.568UK to
155.572UK

User Manual



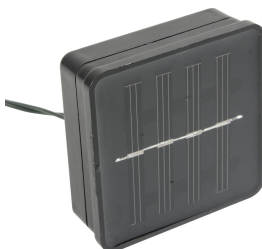
Outdoor solar powered LED string lights. Automatically turns on at dusk and off at dawn when switched to charging mode. No additional wiring needed and with a waterproof solar pack these lights are ideal for indoor or outdoor decoration. Great for brightening trees, shrubs, pagodas, decking or parasols in your garden.

- Suitable for outdoor use - IP44 rated
- Easy to install, no wiring necessary
- Recharges built-in batteries via solar energy (solar panel must be unobstructed from daylight)
- Dusk to dawn light sensor
- Automatically charges when lights are off
- Up to 12 hours light output when fully charged
- Solar pack to first LED: 5m
- Concave shaped LED head gives consistent and uniformed brightness at all angles

Specifications

Item	155.568UK	155.569UK	155.570UK	155.571UK	155.572UK
Batteries	600mAh (rechargeable solar pack)				
Colour	Cool White	Warm White	Multicolour	Blue	Cyan
No. of LEDs	100				
LED spacing	50mm				
LED length	5m				
Overall length	10m				
Cable colour	Dark green				
IP rating	IP44				
Weight	290g				

Installation



- It is important to position the solar panel where it will receive maximum sunlight. The position needs to be where it is free from cover or shade and, ideally, in a position that receives full sun throughout the day.
- Avoid other light sources which may cause solar lights to flicker on and off.
- Secure the lights carefully so they cannot be damaged.
- Insert the solar panel spike in the ground or otherwise make it secure and ensuring the angled toward the lights
- If solar panel get dirty, the charging capacity will be reduced. Clean panels occasionally with damp clothes.

Warnings

- Do not plug in power whilst the string light is wrapped up and inside its packaging
- Fully unwind lights and uncoil the cable before operating
- Use only the supplied transformer. Ensure that the transformer has adequate ventilation
- Disconnect from mains when not in use
- Transformer should be located indoors and protected from the elements
- Avoid damage to the transformer, bulbs and wiring insulation. Do not use when damaged.
- Do not expose to direct heat, flame or immersed in water
- Do not attempt to power any further string lights from this product
- LED bulbs cannot be replaced.
- Do not attempt to remove bulbs
- Insulation of the wire of the light set should not pass over any sharp or potentially damaging surfaces



Disposal: The "Crossed Wheelie Bin" symbol on the product means that the product is classed as Electrical or Electronic equipment and should not be disposed with other household or commercial waste at the end of its useful life. The goods must be disposed of according to your local council guidelines.

*Errors and omissions excepted.
Copyright© 2015. AVSL Group Ltd.*