



## Outdoor WiFi Solar Security Camera

Order ref: 350.040UK

User Manual

A high quality and robust outdoor Wi-Fi security camera powered by an integrated solar panel that sends full colour HD images to a connected smart device via the TUYA application. Fitted with a PIR movement detection sensor and 4 bright LEDs that provide detailed coverage both day and night of distances up to 80 metres, this unit boasts many additional functions including a two-way intercom and audible alarm. The camera is also fitted with 4 rechargeable batteries that can provide up to 4 months of use without sunlight and is easily installed to an external wall using the supplied mounting bracket and fixings.

### Specification:

<b>Video resolution</b>	2M pixels
<b>LED power</b>	300 Lumens
<b>Viewing angle</b>	110°
<b>Solar panel</b>	3.5W
<b>Battery capacity</b>	4x 2200mAH
<b>PIR coverage</b>	L-4m, M-6m, H-8m
<b>Microphone sensitivity</b>	24dB
<b>Operating temperature</b>	-10°C~60°C
<b>Wireless range</b>	80m approx. (open area)
<b>IP rating</b>	IP55
<b>Dimensions</b>	230 x 135 x 100mm
<b>Weight</b>	1.05kg

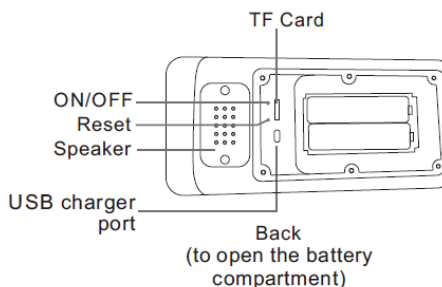
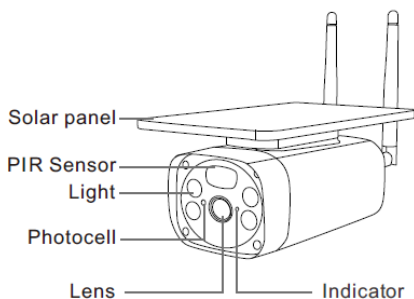
### Features:

- Monitor your property remotely via TUYA app and a compatible smart device
- 2MP, 110° wide angle HD camera
- Fitted with 2 high power white and 2 high power IR LEDs
- Powered by 4 removable 18650 lithium rechargeable batteries via integrated solar panel
- PIR human detection function
- Two-way intercom and audible alarm functions
- Smart mode/infrared mode/colour mode for night vision mode options
- Quick and simple wire-free installation
- TF card compatible for storing images and videos (not supplied)

### In the Box:

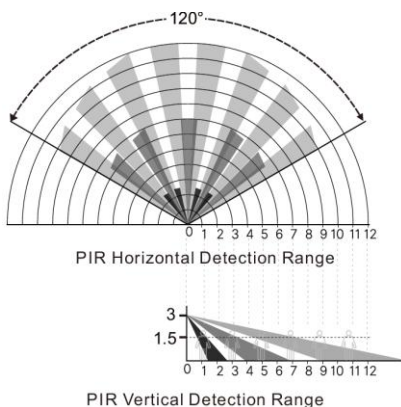
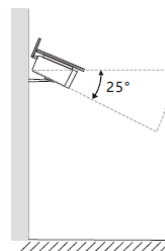
1. Outdoor HD camera unit
2. Wall fixing bracket
3. 4pcs 18650 Lithium batteries
4. USB Type-C charging cable (1m)
5. Fixings kit
6. User guide

## Controls and Functions:



## Unit Installation:

1. After unboxing the unit, remove the underside battery compartment (see above) and remove all shipping tabs from the batteries. Ensure they are installed with the correct polarity and seated correctly in the battery compartment.
2. Using the USB charging lead supplied, charge the unit for at least 10 hours to ensure the batteries are charged to their capacity (LED indicator flashes green while charging).
3. Replace the battery compartment cover ensuring the rubber seal is correctly seated into the recess.
4. Before installing the unit to an outside wall, take time to consider the location in relation to the sun. Ideally the unit should be mounted facing the South and away from any obstructions that would block the sunlight from hitting the solar panel.
5. As the unit also needs to connect to your wireless network try to locate it as close as possible to your router for maximum signal strength.
6. Use the screws and plugs provided to fix the mounting bracket to the wall surface ensuring its located at least 3m from the ground.
7. Securely fasten the main unit onto the bracket using the fixing screws provided.
8. Tilt the unit forward around 25° and ensure it's centralised in the required coverage area.

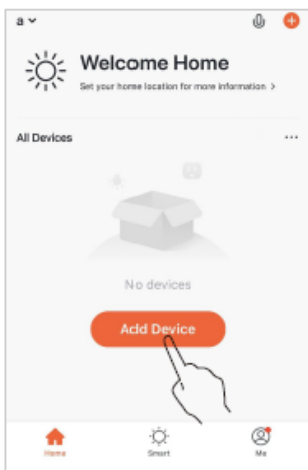


## Installing and using the TUYA app:

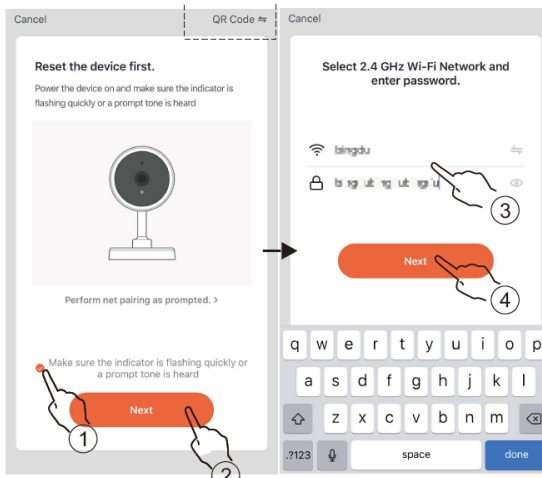
This unit can connect to several smart devices using the TUYA application. Download the TUYA Smart application from either the Apple or Google app stores using the below QR code.



1. After installation ensure that your smart device is connected to 2.4Ghz wifi signal (5Ghz is not supported) and then open the app.
2. Register for a Tuya Smart account by following the on-screen instructions, and you should then get to the home screen.
3. Next select "Add device" then select "1. Camera and Lock" followed by "2. Floodlight Camera" (see below).



4. Connect the app to the camera using the following method:
  - a. Switch on the camera by pressing and holding the power button for a few seconds.
  - b. Follow the on-screen instructions for resetting the camera and entering network configuration mode (see 1&2 below).
  - c. Enter the password for your chosen 2.4Ghz wireless network then tap "Next" (see 3&4 below).




- d. Position the QR code displayed on the screen of your smart device around 15-20cm in front of the camera lens as shown below.





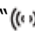
- e. Once connected successfully you should hear a confirmation tone and see the message "Added successfully" as shown above.
5. Please be aware that the TUYA application is constantly being updated so the above connection instructions could be altered at any time. For up to the date instructions and information on the TUYA Smart app please visit:  
<https://developer.tuya.com/en/docs/Document/user-manual-for-tuya-smart-v3177?id=Kagkdesn5nscr>


## App Operations:

Motion detection function - Each time the motion detection function is triggered the unit will take a 15-second video recording. The LEDs will automatically light up at night and you can also set the sensitivity of the detection.

Visual intercom function - You can remotely monitor your home wherever you are. When experiencing an intrusion, you can tap " " on the app to warn the intruder that you are watching them.

Snapshot and video recording - Tap " " or " " on the app to take a picture or video recording from the live camera footage. These pictures or videos will be saved into the Gallery of your smart device or TF card if installed.

Audible alarm - When experiencing an intrusion, tap " ", the camera will give out an alarm sound to warn the intruder.

Video recording playback - Tap " " on the app to playback the video recordings stored on your smart device or TF card if installed.

Night mode selection - Select either Smart mode, Infrared mode or Colour mode options.

## Troubleshooting:

### 1. The device is offline

- Check that your router is connected to the internet.
- Remove the batteries for around 10-15 seconds to reboot the device.
- Long press the "Reset" button to reset the device, then install again as described above.

### 2. The device is always in "Low battery" status

- Check that the solar panel is clear and free from obstructions.
- Lower the brightness of the LEDs via the app.
- If the camera is installed facing an area with lots of movement, try adjusting the sensitivity of the PIR in the app.

### 3. False motion detection alarm

- Check that the PIR is not in direct sunlight and adjust the camera angle if necessary.
- Try adjusting the sensitivity of the PIR in the app.

### 4. The LEDs don't light up when the device is triggered at night

- If the battery power is low, the white LEDs may not light up due to insufficient charge. Top up the battery power if necessary.
- Check "Night mode" settings as if "Infrared" is selected the white LEDs won't come on

### 5. Motion detection distance is too short

- Ensure the camera is installed to the recommended height of 3m and angled downwards by 25°

## Wifi LED Indicator functions:

LED function	Wifi status
Flashing red at 1s intervals	Waiting for network configuration
Flashing green rapidly	Adding the device
Constant green	Device is connected and functioning correctly
Alternating red and green	Firmware currently updating

## Warning:

- For reasons of electrical safety, this device must never be immersed in water or exposed to excessive force.
- Do not use this device if you find that it is damaged in any way.
- Only use the power supply recommended by the manufacturer.
- Do not attempt to repair this device or take apart under any circumstances, as this will invalidate your warranty.



This product is classed as Electrical or Electronic equipment and should not be disposed with other household or commercial waste at the end of its useful life. The goods must be disposed of according to your local council guidelines.

### **Errors and omissions excepted.**

Copyright© 2025 AVSL Group Ltd, Unit 2 Bridgewater Park,  
Taylor Road, Trafford Park, Manchester. M41 7JQ.

[www.avsl.com](http://www.avsl.com)

AVSL (Europe) Ltd, Unit 3D North Point House,  
North Point Bus. Park, New Mallow Road, Cork, Ireland.

350.040UK User Manual