



2.4G Wireless Keyboard & Mouse Combo

500.055UK

Quick Start Guide

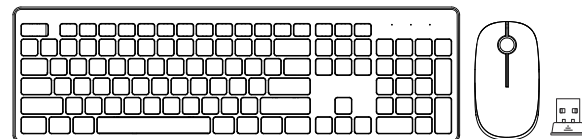


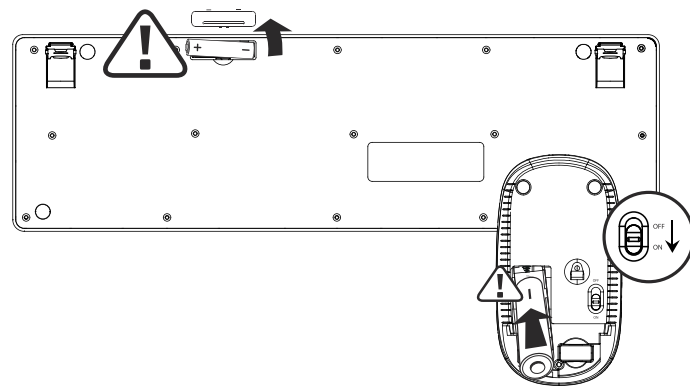
Table of Contents

Installation	2
Specifications	4
Troubleshooting	5
In the Box	5

Installation

Step 1

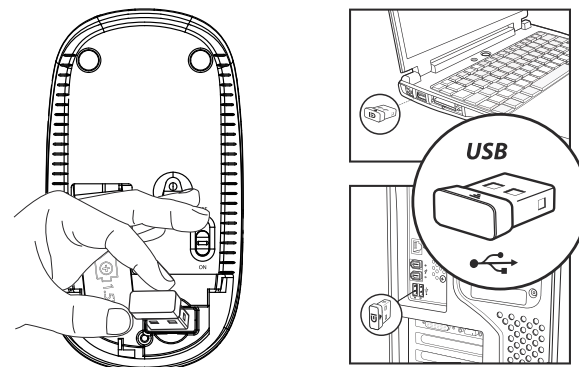
Open the battery case and power switch to "ON".



Insert the battery.
(pay attention to the positive and negative terminals).

Step 2

Remove the receiver.



Step 3

Insert the receiver into your computer's USB port.

Note: it may take a few minutes for the mouse to be usable as required drivers may automatically install to facilitate usage.

Product features

Stable wireless transmission

Within the scope of 20m of 360 degrees, the 2.4G wireless technology can provide stable connections.

Ergonomic and sleek design

The round chocolate keycaps are developed based on the contact area of the fingers and keycaps, which can provide you with the comfortable experience of input.

Super easy installation

Plug & Play, without installing any additional software.
One small Nano USB receiver can connect both the mouse and keyboard to your computer. Just plug it into a USB port and you're ready to go.

Silent wireless mouse

Quieter and Easier to click, make you concentrate on your work without disturbing others beside you

Mouse basic parameters:

Mouse size: 110x 60x 31mm
Mouse weight: 62g
Suitability: 2 standard buttons and 1 scroll wheel
Sensitivity: 1600dpi
Mouse return rate: 250Hz
Mouse key button life: 3 million
Transmission distance: ≥20m
Battery: 1AA battery (included)
Color: black

Three different power saving modes

Mode 1: ≈0.5±0.2mA
Mode 2: 1min≈50µA
Mode 3: 30min≈30µA

Keyboard basic parameters:

Keyboard size: 447.7x135.75x22.1mm
Keyboard weight: 467g
Keyboard keys: 104Keys+Multi-media keys
Keyboard key button life: 10 million
Color: black

Three different power saving modes

Mode 1: ≈1.5mA
Mode 2: 1min≈50µA
Mode 3: 30min≈20µA

System requirements

IBM or compatible computer
Windows: 2000/ME/XP(x64)/Vista/7/8/10
Mac OS X (More than V10.4)
Usable USB port

Troubleshooting

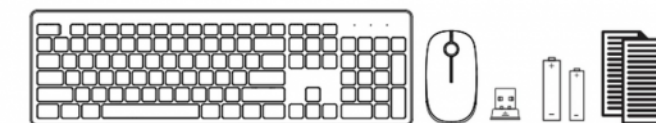
1. Check the battery. If it is drained replace it.
2. Disconnect and reconnect the USB dongle to establish a new connection.
3. Move to mouse closer to the receiver if it is out of optimum range.

How to reconnect the USB dongle?

Mouse: 1.Put the battery→turn on the power→Press left, middle, right 3 buttons 5- 8 seconds→let it go, then put the dongle to the computer.
(put the mouse near the computer when you connect)

Keyboard: 1.Put the battery→Press "ESC" and "=" two key together 5- 8 seconds →let it go, then put the dongle to the computer.
(put the keyboard near the computer when you connect)

In the Box



- Wireless keyboard
- Wireless mouse
- Nano receiver
- AA alkaline battery
- User manual



Errors and omissions excepted.
Copyright© 2021 AVSL Group Ltd, Unit 2 Bridgewater Park,
Taylor Road, Trafford Park, Manchester. M41 7JQ.

AVSL (Europe) Ltd, Unit 3D North Point House,
North Point Bus. Park, New Mallow Road, Cork, Ireland.

100x110mm 100克书写纸黑色里面印刷4折页